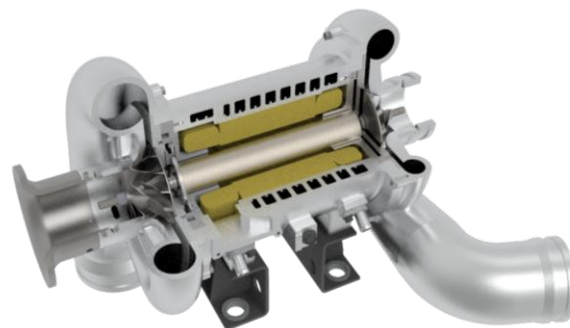
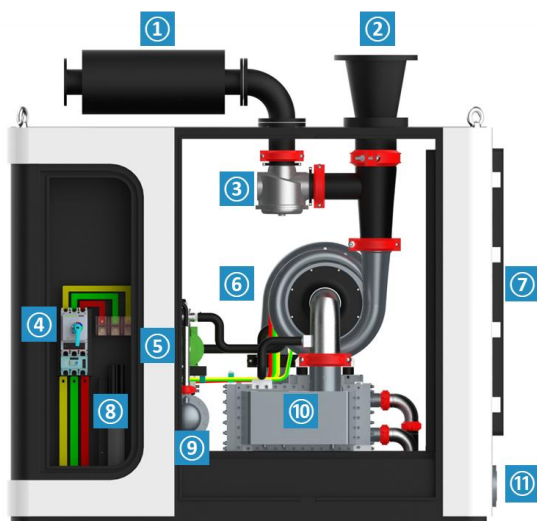


# Compressor specification

2-Stage, Water-Cooled  
Oil-Free Air bearing Centrifugal

## Standard scope of supply



Section view of Compressor core

Standard Scope of Supply		Description
1	Hybrid design silencer	Use both absorptive and reactive design elements
2	Air outlet flange	DN200-PN1.0
3	Vent valve	Prevent turbo from surging, to ensure running safely
4	Circuit breaker	Protection for overload, short-circuit and ground fault
5	Water pump	Ensure sufficient cooling water flow and pressure
6	Compressor core	2-stage impellers driven by a single high-speed rotor directly, combined with PM motor and oil-free air bearing
7	Air inlet filter	High efficiency fine particle size filter installed with differential sensor
8	Invertor	Liquid cooling, efficiency≥98%
9	Tubular heat exchanger	Heat exchange between inner coolant circuit and external cooling water tower
10	Water-to-air intercooler	Designed to deliver high thermal efficiency in compact spaces
11	In/out water pipe interface	Connect the external water tower